



logisticsplus.com



FURNITURE, FIXTURES, & EQUIPMENT

LOGISTICS PLUS FF&E DIVISION

Logistics Plus serves clients seeking a full-service global solution for their Furniture, Fixtures, and Equipment (FF&E) projects in the hospitality, retail, co-working, co-living, healthcare, education, trade show, and real estate development industries.

ABOUT LOGISTICS PLUS



WE'RE EXPERIENCED AND WELL RECOGNIZED

- Founded in 1996 by Jim Berlin to be a lead logistics provider for GE Transportation
- \$500M+ privately held company headquartered in Erie, PA (USA)
- Many awards for entrepreneurship, growth, and service excellence





OUR VALUES



Serving thousands of clients annually, we construct logistics and supply chain partnerships that are nimble, flexible, capable, accurate and consistently deliver success. We live by our motto "Passion for Excellence". Beginning with LP's founder and leadership, our team is guided by a few principles which, while limited in number, form the core of our corporate character. **It's in our DNA:**

ASSUME NOTHING. *Don't assume what you thought or what you were told is going to happen. CHECK. Follow Through. Make sure. Don't drop the ball. Don't assume.*

WE CARE. *This matters. It matters to our customer, and to their customers and to us. If you don't care about what you are doing, the customer will feel that, and it won't work. If you don't care about our customer succeeding, you should do something else for a living.*

COMMUNICATION IS KEY. *Self-explanatory. OVER-communicate. Don't be the one people are "waiting on" so they can do their job. Let folks know what is happening. Communication is SO easy in this day and age. COMMUNICATE!!!*

NO SURPRISES. *Don't let our customer get surprised or worse tell you that we messed up somewhere. Let the customer know if there are problems, so they have time to react. Take responsibility and make that tough call. Better than dealing with the fallout of letting the customer get blindsided.*

ONE TEAM. *The vendors, partners and people we've chosen to help us in supporting our customers are LP. They are not "other"; they are us. Treat them as such. If they fail, we have failed. We need to help THEM succeed, so our customer/project succeeds. Only when that happens, does LP succeed.*

BE NICE. *No reason to not be nice. Very few rules here, but the golden rule always applies: "Treat others as you'd like to be treated yourself". Simple. You learned that in grade school. You can kick butt when you need to kick butt, but do it without anger and with respect. No need to ever belittle anyone. Don't ever humiliate. Teach. Coach. Improve.*

FIND A WAY OR MAKE ONE. *Our CEO's first "Thought for Today" 25 years ago. FIND an answer. Don't quit until you do. Be smart. Be creative. Find a way to "YES!"*

ELBOW GREASE. *As Einstein said, "1% inspiration, 99% perspiration". Not always fancy. Just effort. Effort works.*

WORK SMART. *"Busy" is one thing but not THE thing. A hamster on a wheel is busy. Work smart. Find better ways. Speak up. Don't just look busy, hustle and be effective.*

We believe in what we do and how we do it. It is what makes us different. We stand out, differentiating ourselves from the competition through our people and our actions. Many companies state this, but we walk the talk every day. We are a flat organization with no bureaucracy where everyone is responsible and accountable to act like owners and make the difference for our customers.

No red tape or bureaucracy, just action and results.



COMPANY **TIMELINE** (EARLY YEARS)



1996

LEADING LOGISTICS

Logistics Plus founded to manage domestic freight and project cargo for GE Transportation.



2011

HORIZON LOGISTICS

Logistics Plus acquires Horizon Logistics adding additional freight forwarding talent and customers to the company.



1999

GOING GLOBAL

Logistics Plus expands to India, China, and Indonesia and begins serving other industrial customers.





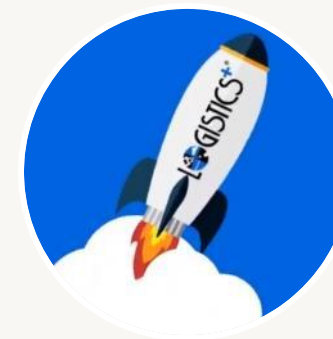
COMPANY **TIMELINE** (MORE RECENTLY)



2015

FURNITURE, FIXTURES & EQUIPMENT

Logistics Plus selected by large multinational co-working brand to oversee its entire global supply chain, establishing the company as a major player in the FF&E logistics industry.



2014

GROWING THE BRAND

Logistics Plus launches new website, company branding and marketing support programs.



Today

UPWARD & ONWARD!

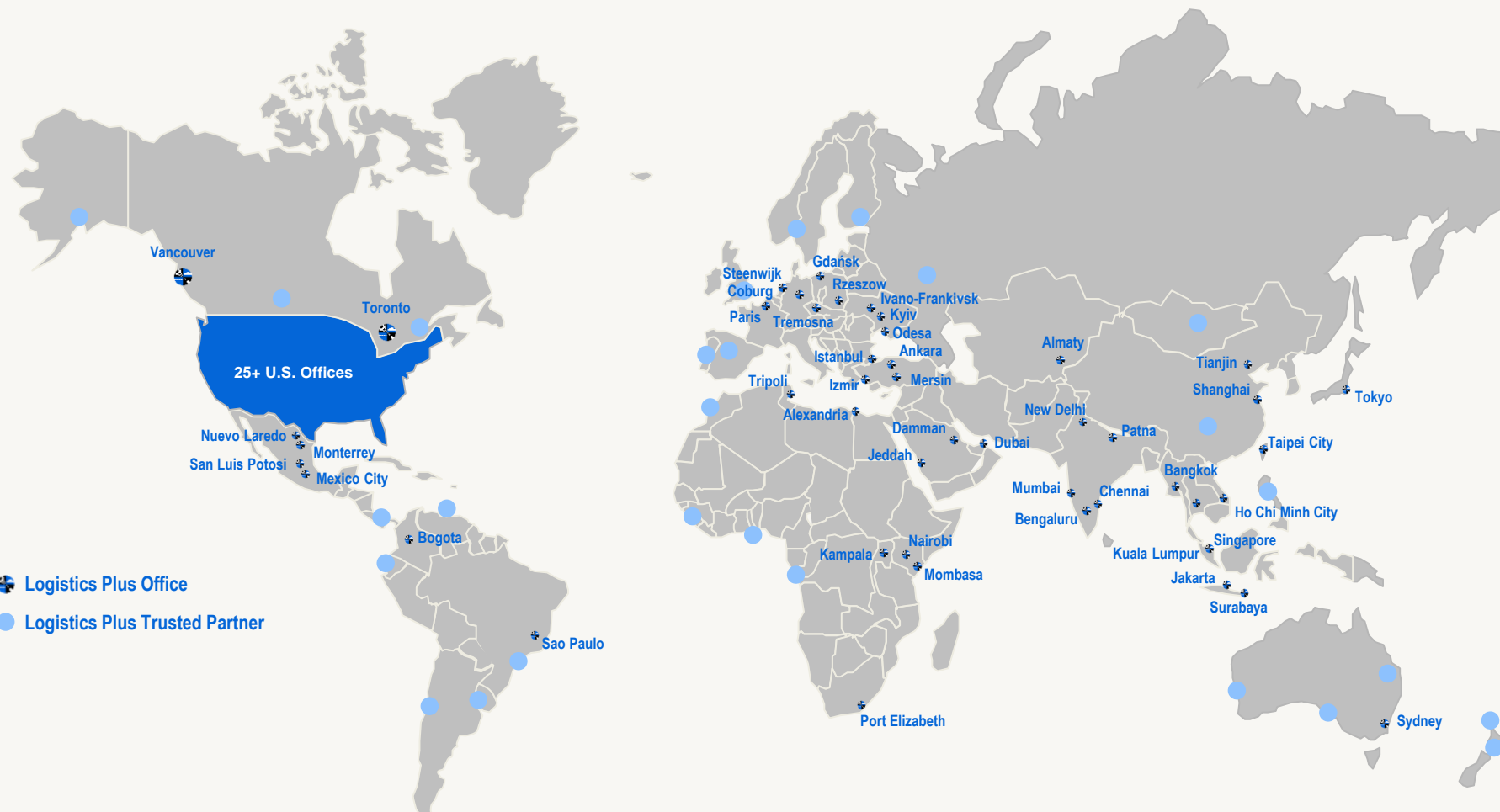
Logistics Plus continues record-growth with contemporary companies such as Amazon, Google, Rivian and many others.



WE HAVE LOCATIONS **AROUND THE WORLD**



 We have 1,000 employees located in 30+ countries worldwide





THE LOGISTICS PLUS NETWORK



NORTH AMERICAN



North American
Transportation



Warehousing &
Fulfillment Solutions



National Truckload
Dedicated Fleet

INTERNATIONAL



International
Freight Forwarding



Project Cargo &
Global Operations



Custom Broker Solutions



LINGUISTIC SOLUTIONS
Global Linguistics

4PL SOLUTIONS



Supply Chain Solutions

4PL and Dedicated
Logistics Programs



COVERING YOUR SUPPLY CHAIN

We are **LARGE** and **COMPREHENSIVE** enough to satisfy any link in your North American or Global supply chain ...

But we are still **FLAT**, **NIMBLE** and **RESPONSIVE** to your specific logistics challenges.

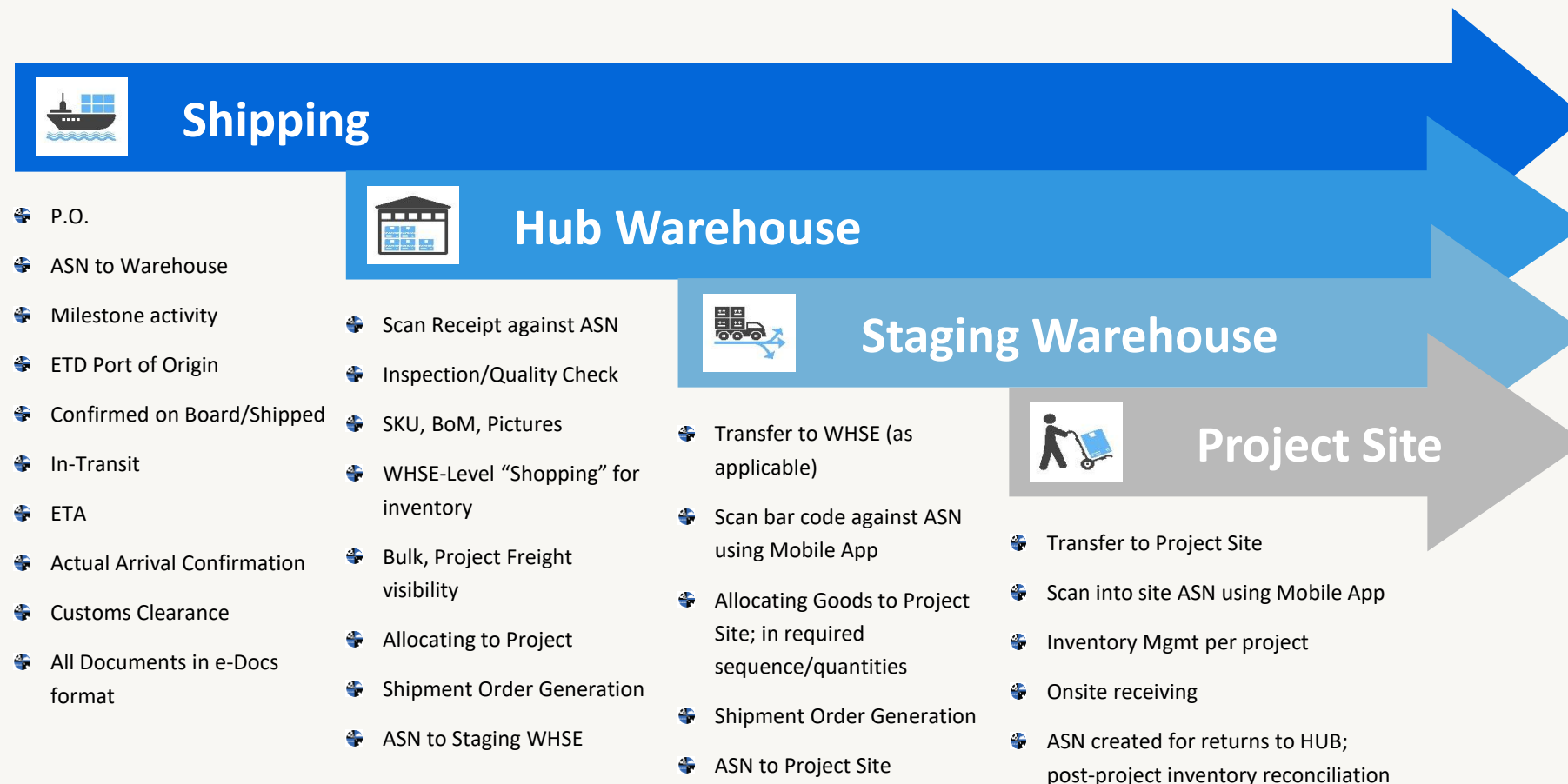
PROVEN SOLUTIONS FOR CLIENTS

As the global supply chain manager for many brands, Logistics Plus coordinates procurement logistics, warehouses and delivers thousands of items for its client's sites around the world daily.

Millions of FF&E/OS&E units were installed over the past five years with a claim-free ratio of 99.5% which includes shipping, warehousing, transportation, white glove delivery and installation!



END-TO-END SUPPLY CHAIN VISIBILITY



- ✓ REAL TIME VISIBILITY TO INVENTORY TRANSACTIONS
- ✓ SKU LEVEL INVENTORY IMAGE CAPTURE & DISPLAY
- ✓ ASSET LEVEL TRACKING CAPABLE
- ✓ MIN/MAX REPLENISHMENT TRIGGERS
- ✓ BARCODING & SERIALIZATION
- ✓ ANY-TO-ANY INTEGRATION CAPABILITY
- ✓ SKU LEVEL VALUATION IN INVENTORY
- ✓ SLOW MOVING SKU REPORTING
- ✓ "e-DOC" DOCUMENT UPLOAD AND VISIBILITY
- ✓ COMPLETE SUITE OF REPORTING AND ANALYTICS

FROM PO TO INSTALL, WE DO IT ALL FOR YOU™



FULL SERVICE FF&E AND OS&E LOGISTICS SOLUTIONS



Freight Management

- Flexible Freight Services
- Dedicated Coordination
- Ocean, Air, Rail & Truck
- Transportation solutions that meet your needs



International Freight Forwarding

- Import & Export Services
- Air Freight Forwarding
- Ocean Freight Forwarding (FCL & LCL)
- Customs Clearance & Trade Compliance



Warehousing & Fulfillment

- Inbound & Outbound Turnkey & Customized Process
- Clean, Secured Facilities
- Pick, Pack, Kitting, Ship
- Order Entry & Reporting
- "Room in a Box"



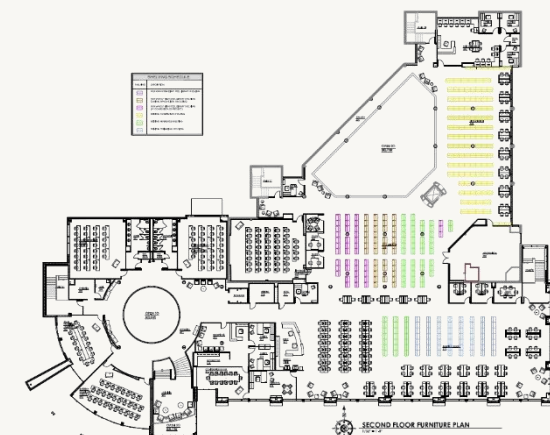
Full-Service Installation Management

- 4PL & Supply Chain Consulting
- Dedicated On-Site Resources
- Industry-Specific Solutions
- Project Management
- Professional, Full-Service Installation Management



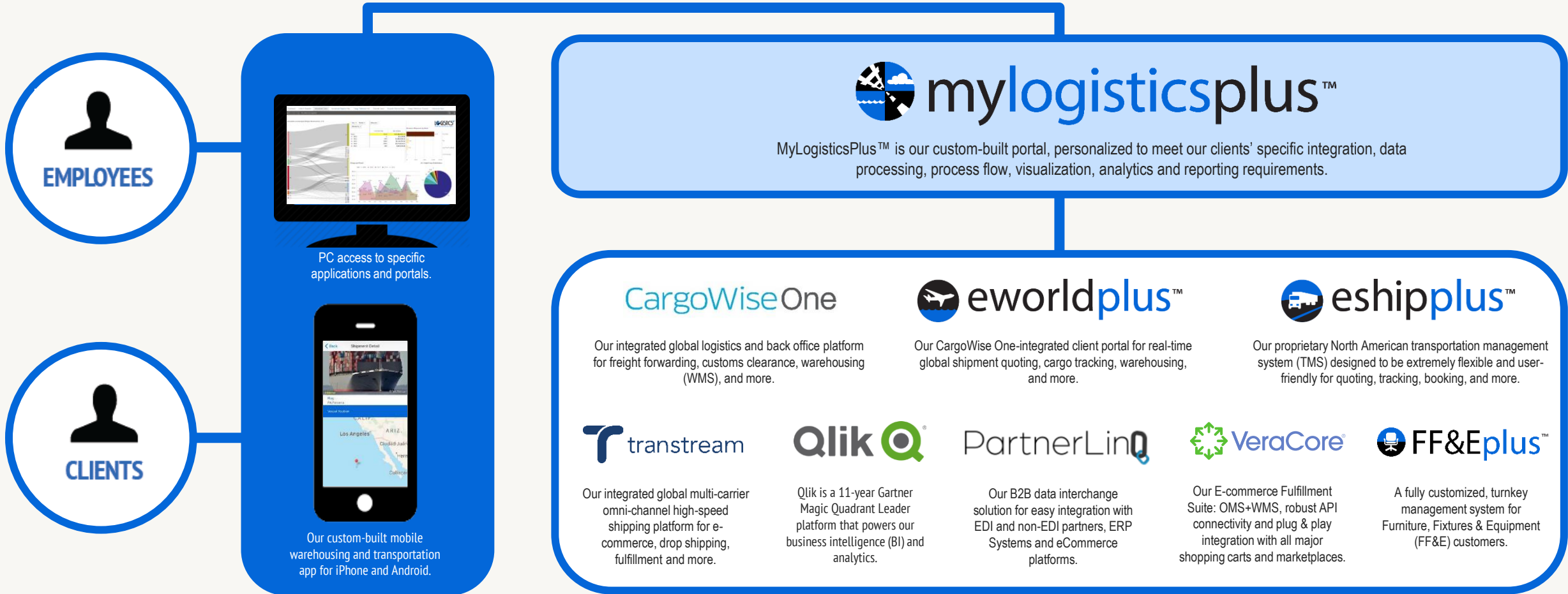
Technology Solutions

- Web services and EDI integrations
- PO / Order / Inventory Management
- eShipPlus™ Trans. Mgt. System (TMS)
- eWorldPlus™ Cargo Management Tools
- MyLogisticsPlus™ Reporting & Dashboards
- Warehouse Management System (WMS)





WE PROVIDE WORLD-CLASS TECHNOLOGY





WE HAVE A TURNKEY, CUSTOMIZABLE FF&E PLATFORM

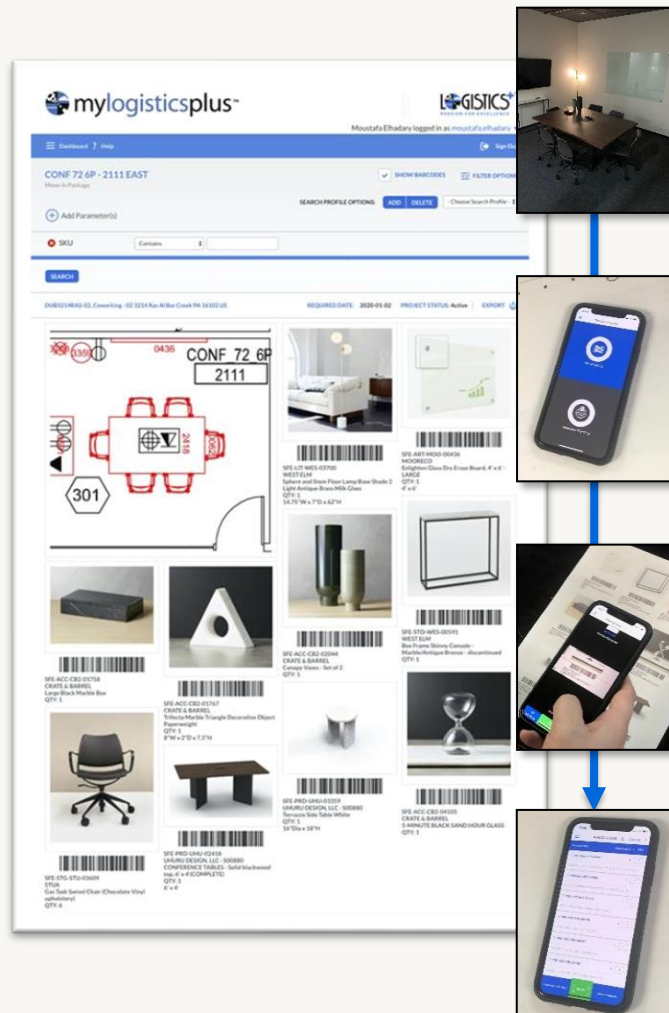


Our Furniture, Fixtures & Equipment platform is **FF&Eplus™**





THE LOGISTICS PLUS MOBILE SCANNING APP



Inventory integrity is verified by using the app to scan product on site. Scanned inventory is then audited against what was ordered in My.LP packages. Final scans create an accurate inventory list on the ASN.



Capture 100% product budget cost



Creates inventory on ASN per project



Accurate audit of planned vs installed



Eliminates manual entry errors



Available on Android and Apple products



LOCATION LAYOUTS
AND DESIGNER
CONCEPT BOARDS

MyLP Package
SKUs

Warehouse
Pick

Shipment to
ISP

ISP Receiving
Audit

Site Install

Mobile SCAN



Final ASN
Inventory

SKU VISIBILITY AND
INVENTORY MANAGEMENT



A modern conference room with large windows and a long wooden table. The room is empty, with several beige leather chairs arranged around the table. A laptop is open on the table. The floor is covered in a patterned carpet. The ceiling has a grid of lights. The windows offer a view of a city landscape.

Solutions in Action:

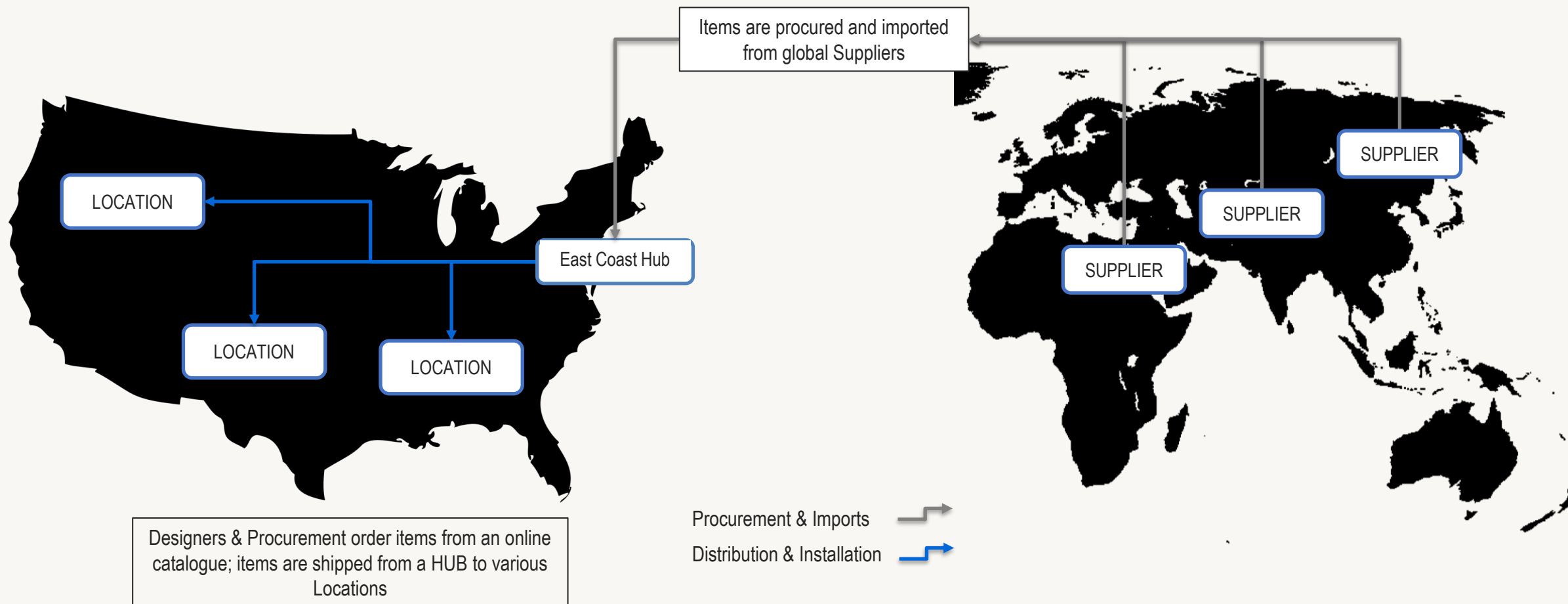
Logistics Plus manages the complete, global supply chain for industry-leading companies



SOLUTION IN ACTION: FURNITURE, FIXTURES, & EQUIPMENT



Managing end-to-end supply chain for global hospitality, co-working, co-living, education and office space providers





SOLUTION IN ACTION: FURNITURE, FIXTURES, & EQUIPMENT

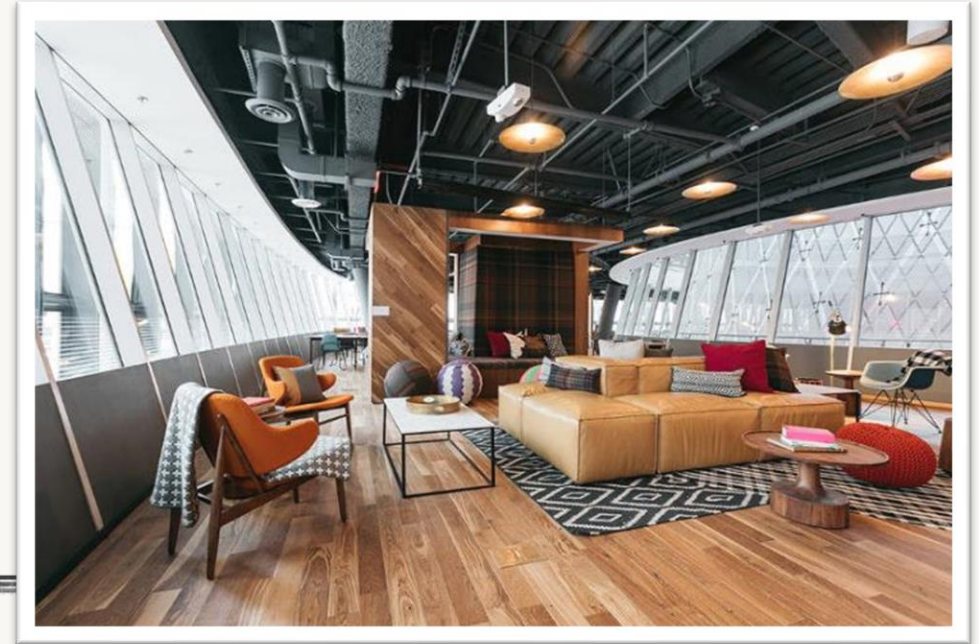
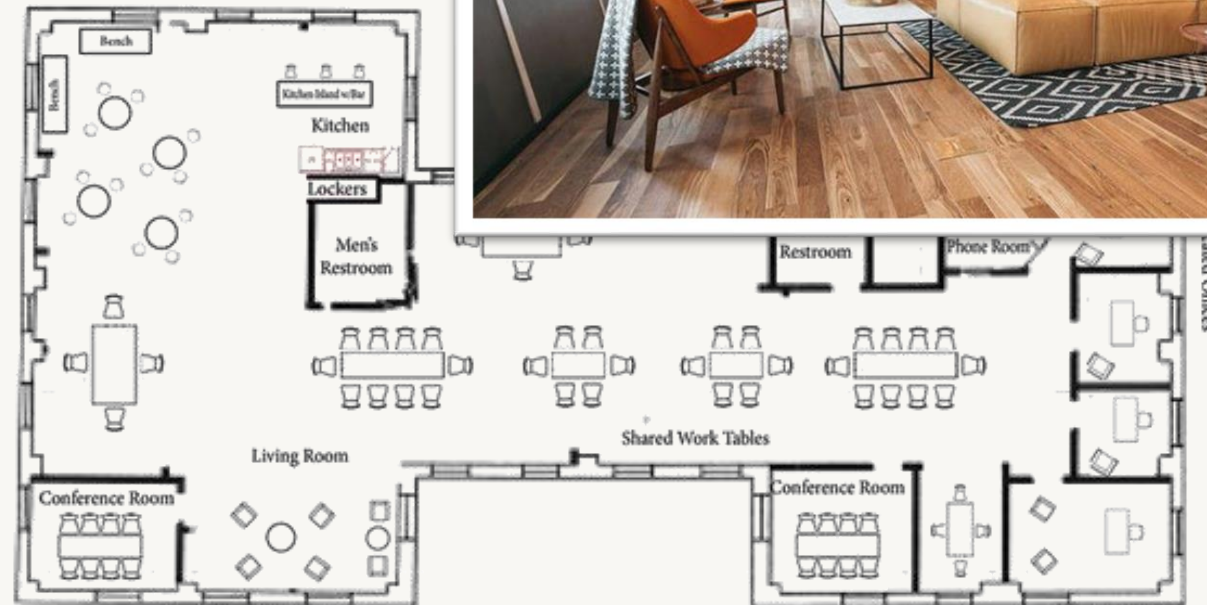


Context

- Client provides co-living space at various Locations (regions) around the world
- Each Location is treated as a separate business unit from the main corporate entity
- For any given location, there could be multiple projects (new job-sites) going on at the same time
- Each project is run by a designer, who is responsible for creating floor plans, ordering materials and overseeing installations
- Client is undergoing massive growth

Problem

1. Client does not have procurement, order management or inventory management capabilities – and requires those turn-key to keep up with growth demands
2. Client needs to keep track of inventory across the network, and record an inter-company transaction between business units when inventory moves from a hub to a location

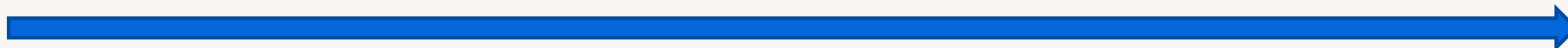




SOLUTION IN ACTION: FURNITURE, FIXTURES, & EQUIPMENT



Problem #1 Solution: LP's **Turn-Key** supply chain solution provides a platform for efficient scale and growth globally



PROCURE



Dedicated Ops Team receives PO from Client and purchases inventory on their behalf

TRANSPORT



International Team arranges pickup and handles international transport based on service needs (ocean or air)

IMPORT



Customs Brokerage Team clears customs and facilitates payment of duties – all records maintained digitally

RECEIVE



Warehouse operations team receives inventory and populates the WMS



SOLUTION IN ACTION: FURNITURE, FIXTURES, & EQUIPMENT



- Problem #2 Solution: **FF&Eplus™** ensures supply chain visibility by providing a customized online product catalogue with inventory management, order entry workflow process, and asset trackability between warehouses and project locations.

BROWSE & ORDER

FLOOR PLAN IMAGE (MAX: 7500 BY 4000)
No file selected Choose File CLEAR IMAGE

Download Import Template

IMPORT SKUS EXPORT SKUS ADD SKU CLEAR SKUS

SKU Image	SKU	SKU Description	Category	Quantity	Shipping Cost	Taxes and Duties	VAT	Action
	IND-RUG-LID	Lubo Rug - Custom	ACCESSORIES	1	0.00	0.00	0.00	
	IND-RUG-RPD	Anchor Grip 30, Felt & Reinforced Rubber Rug Pad - 6' x 8'	ACCESSORIES	1	0.00	0.00	0.00	
	IND-STG-STU	Gas Task Swivel Chair	FURNITURE	5	0.00	0.00	0.00	
	IND-STG-STU	Gas Task Swivel Chair	FURNITURE	4	0.00	0.00	0.00	
	IND-PRD-RYP	Huddle Table - Single Arrowhead, Walnut Stain Wood, 6' x 4'	FURNITURE	1	0.00	0.00	0.00	

SAVE CANCEL

Designers search through thousands of SKUs stocked at the domestic Hubs – customized product catalogue includes photos & specs

Items are ordered straight from the app and are automatically assigned to their Designer, Location, Project and Package

DELIVER & INSTALL

Update Install Package

PROJECT CODE
ProjectCode22 My first project2

PACKAGE STATUS
Initiated

PACKAGE NAME
Oew

ACTUAL COST 0.00 ESTIMATED COST 0.00

DESCRIPTION (16 OF 1000 CHAR)
description here

FLOOR PLAN IMAGE (MAX: 7500 BY 4000)
No file selected Choose File CLEAR IMAGE

Download Import Template

IMPORT SKUS EXPORT SKUS ADD SKU CLEAR SKUS

SKU Image	SKU	SKU Description	Category	Quantity	Shipping Cost	Taxes and Duties	VAT	Action
-----------	-----	-----------------	----------	----------	---------------	------------------	-----	--------

SAVE CANCEL

Warehouse team picks, packs and ships the items ordered (break-pack and bulk fulfillment)

Local job-site personnel scan-receive the ordered items via mobile app and complete installation according to spec



REASONS WHY YOU NEED LOGISTICS PLUS!



- 🌐 We manage your logistics so you can focus on your core business.
- 🌐 Our teams can integrate with your company in a variety of ways, from full-time onsite resources to offsite logistics management of multiple locations.
- 🌐 We manage inbound and outbound, domestic and international freight.
- 🌐 We connect all the links in your supply chain, from vendor to end customer.
- 🌐 Our teams listen, then design customized and comprehensive supply chain solutions for our clients. Our world-renowned technology suite and customer portal can be operated independently, or can be seamlessly integrated with virtually any ERP, providing data and analytics that drive efficiency and savings.
- 🌐 We provide outstanding value-added FF&E logistics and supply chain services through cost-effective operational planning, efficient execution, unparalleled visibility, and exceptional project management.
- 🌐 Using our unique and efficient supply chain process, LP has successfully managed hundreds of thousands of client SKUs for goods valued in excess of \$100 million – delivering on time, every time. We have served our clients in 25+ countries and 100's of cities from 100+ warehouses opening thousands of spaces and supported renovations and post-move services globally.





THANK YOU!

logisticsplus.com/testimonials

ffe@logisticsplus.com

