



www.logisticsplus.com



INTERNATIONAL FREIGHT FORWARDING

LOGISTICS PLUS INC.

Logistics Plus is a leading worldwide provider of international freight forwarding services including air, ocean, ground, and rail options. Our experts can also help you with imports and exports, documentation, customs clearance, and global trade compliance.

ABOUT LOGISTICS PLUS



WE'RE EXPERIENCED AND WELL RECOGNIZED

- Founded in 1996 by Jim Berlin to be a lead logistics provider for GE Transportation
- \$500M+ privately held company headquartered in Erie, PA (USA)
- Many awards for entrepreneurship, growth, and service excellence





COMPANY **TIMELINE** (EARLY YEARS)



1996

LEADING LOGISTICS

Logistics Plus founded to manage domestic freight and project cargo for GE Transportation.



2011

HORIZON LOGISTICS

Logistics Plus acquires Horizon Logistics adding additional freight forwarding talent and customers to the company.



1999

GOING GLOBAL

Logistics Plus expands to India, China, and Indonesia and begins serving other industrial customers.





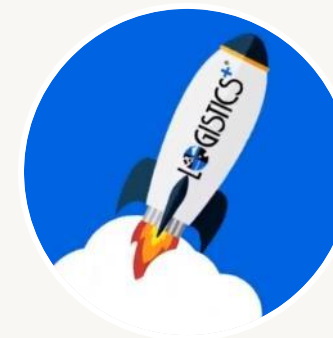
COMPANY **TIMELINE** (MORE RECENTLY)



2020

ADAPTING TO CHANGE

Logistics Plus adapts to COVID by creating new LP Med division, expanding warehousing, and broadening services.



2015

GROWING THE BRAND

Logistics Plus launches new website, company branding and marketing support programs.



Today

UPWARD & ONWARD!

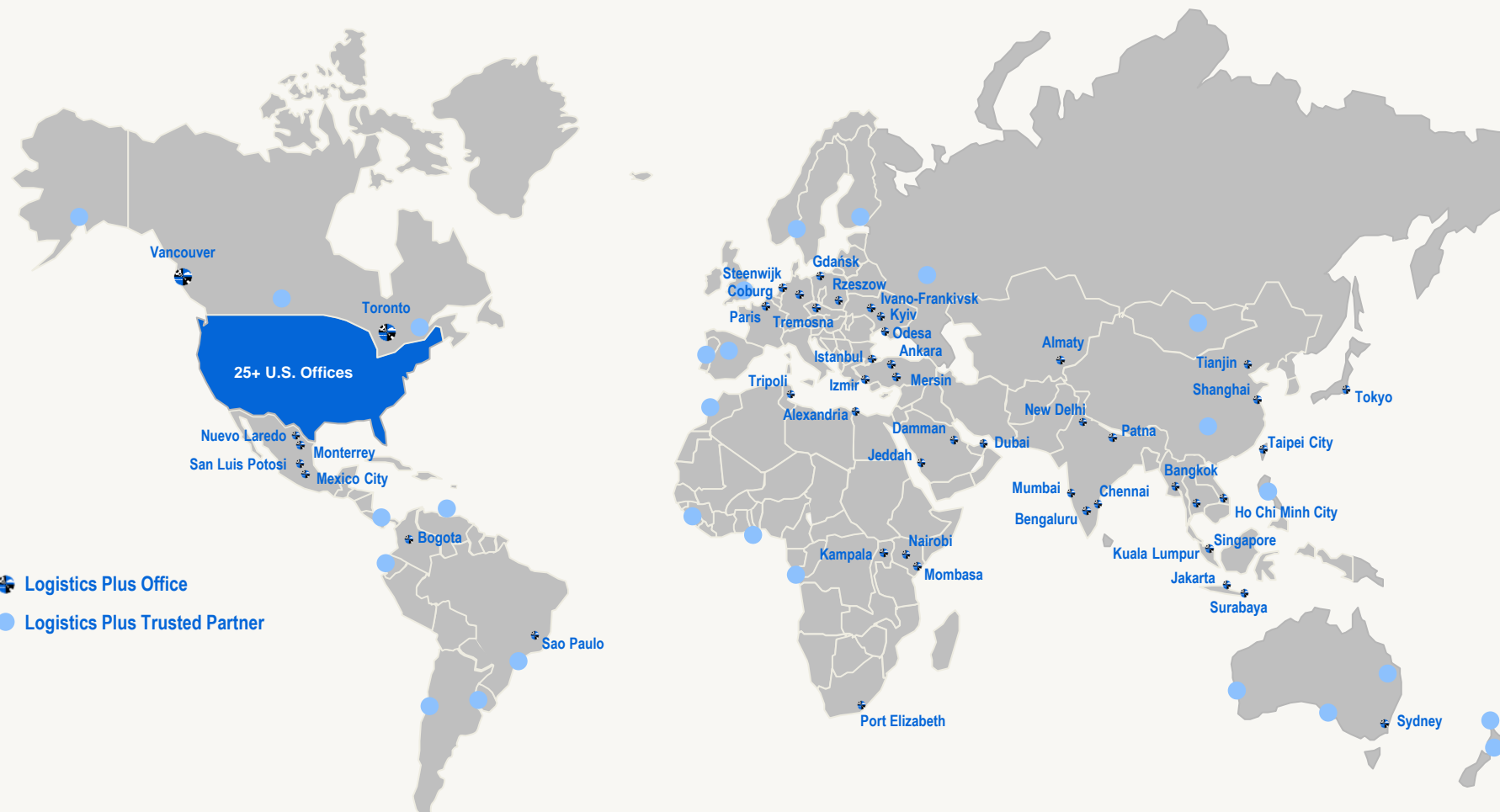
Logistics Plus continues record-growth with established and 21st century companies such as GE, Google, and many others.



WE HAVE LOCATIONS **AROUND THE WORLD**



 We have 1,000 employees located in 30+ countries worldwide



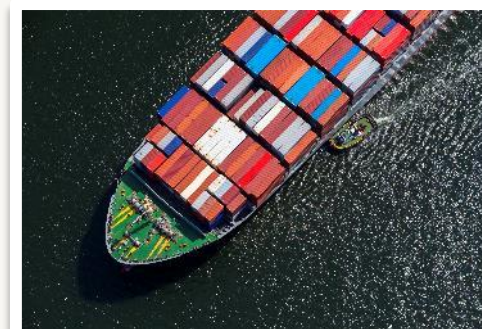


OUR INTERNATIONAL SERVICES



IMPORTS & EXPORTS

With Logistics Plus as your global import and export partner, it's easy to manage all parts of your international supply chain.



AIR & OCEAN FREIGHT

Logistics Plus is an expert at getting your freight on the water or in the air and to its final destination.



CUSTOMS & COMPLIANCE

Logistics Plus can help you navigate complex tariffs and regulations with customs brokerage and global trade compliance solutions.



TECHNOLOGY SOLUTIONS

Logistics Plus offers practical, world-class technology solutions for transportation management and international freight forwarding.



IMPORTS & EXPORTS

WITH LOGISTICS PLUS AS YOUR GLOBAL IMPORT & EXPORT PARTNER,
IT'S EASY TO MANAGE YOUR INTERNATIONAL SUPPLY CHAIN.

- 🌐 International Freight Forwarding Services
- 🌐 Multi-Mode Air, Ocean, Ground, & Rail Options
- 🌐 Project Cargo
- 🌐 Global Trade Compliance
- 🌐 Customs Brokerage Solutions





INTERNATIONAL **AIR & OCEAN** FREIGHT

LOGISTICS PLUS IS AN EXPERT AT GETTING YOUR FREIGHT IN THE AIR OR ON THE WATER AND TO ITS FINAL DESTINATION.



International Air Freight

- Airport to Airport & Door to Door
- Dedicated Air Charters
- Deferred, standard, and expedited
- Choose From a Variety of Flight Options



International Ocean Freight

- Port to Port & Door to Door
- Full Container Loads (FCL)
- Less Than Container Loads (LCL)
- Frequent Sailings At All Major Ports





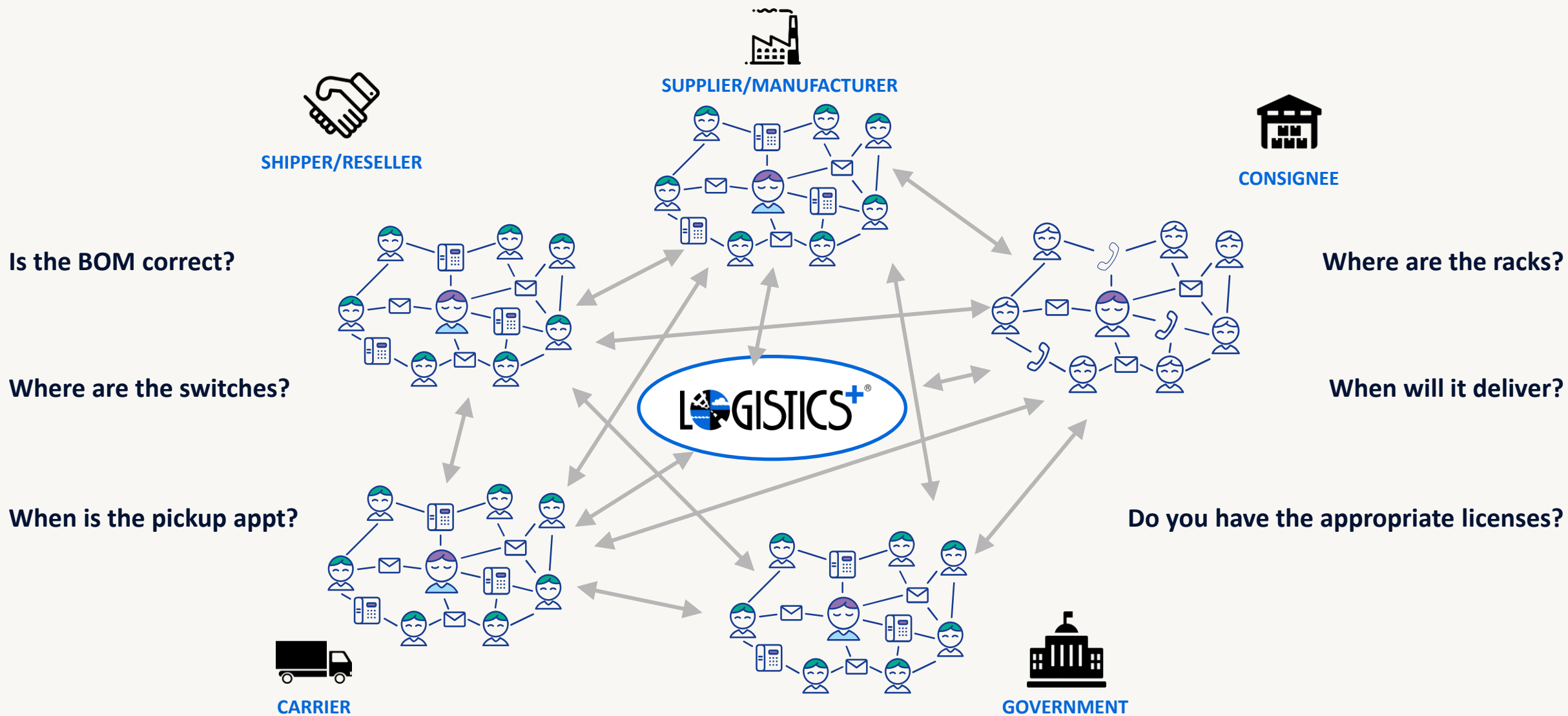
CUSTOMS & COMPLIANCE SOLUTIONS

LOGISTICS PLUS ENSURES THAT ALL RULES AND REGULATIONS ARE FOLLOWED AS YOUR FREIGHT MOVES ACROSS DIFFERENT BORDERS.

- 🌐 U.S. Customs Brokerage
- 🌐 Global Trade Compliance
- 🌐 HTS Code Classification
- 🌐 ECCN Classification
- 🌐 Employee Training Seminars
- 🌐 Free Trade Agreement Assistance
- 🌐 Import & Export Manual Development

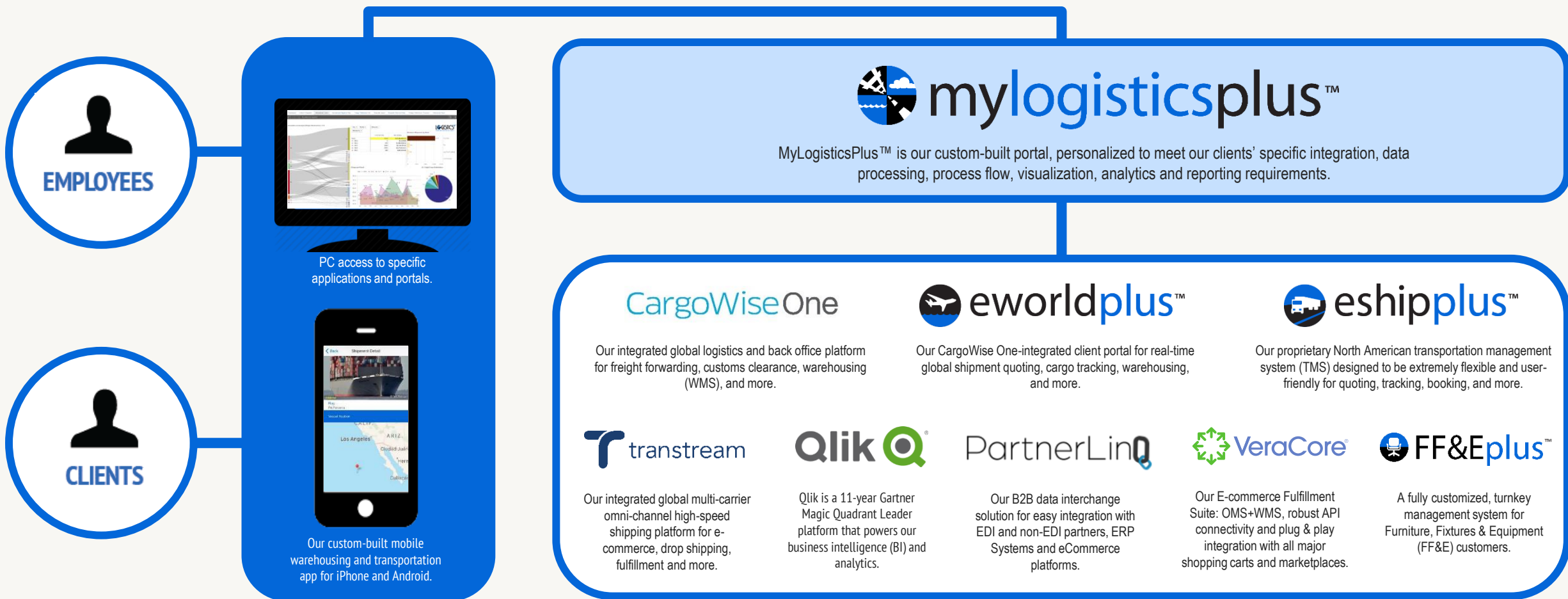


WE OFFER IOR & EOR SERVICES



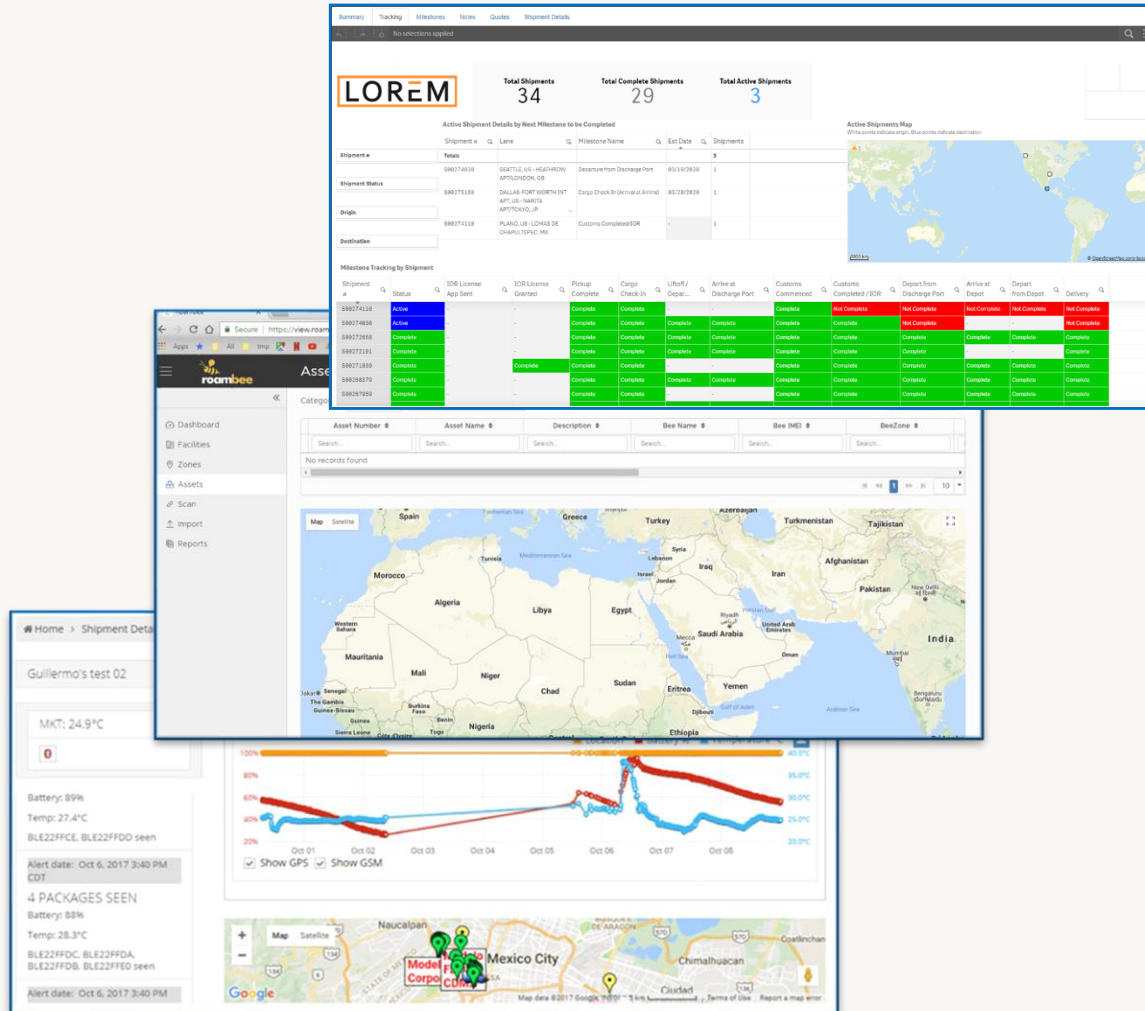


WE PROVIDE WORLD-CLASS TECHNOLOGY





REAL-TIME STRATEGIC ASSET TRACKING VIA GPS



Worldwide real-time location and condition monitoring for assets and the supply chain

- Enterprise-class IoT. Sensors for location, temperature, humidity, shock (impact), light exposure (container opened), tampering (attempted device removal), tilt, GSM jamming, and air pressure.
- Real-time alerts via SMS, email & dashboard, including changes in ETA, deviation from assigned routes, notifications on crossing user-defined waypoints, temperature thresholds breached, package tampering, goods dropped or tipped, etc.
- Analytics and reporting – “heat maps”, aggregate shipment or asset data, statistical data (distribution/deviation from averages or means), transporter/lane performance, etc.



WE'RE HERE TO **HELP YOU SUCCEED** WITH INTERNATIONAL SHIPPING!

Logistics Plus Inc. | 1406 Peach Street | Erie, Pennsylvania 16501 USA

Phone : **+1.866.LOG.PLUS** (+1.866.564.7587)

Email : **pricing@logisticsplus.com**

Website: **logisticsplus.com**

 facebook.com/LogisticsPlus

 twitter.com/LogisticsPlus



THANK YOU!

logisticsplus.com/testimonials

