

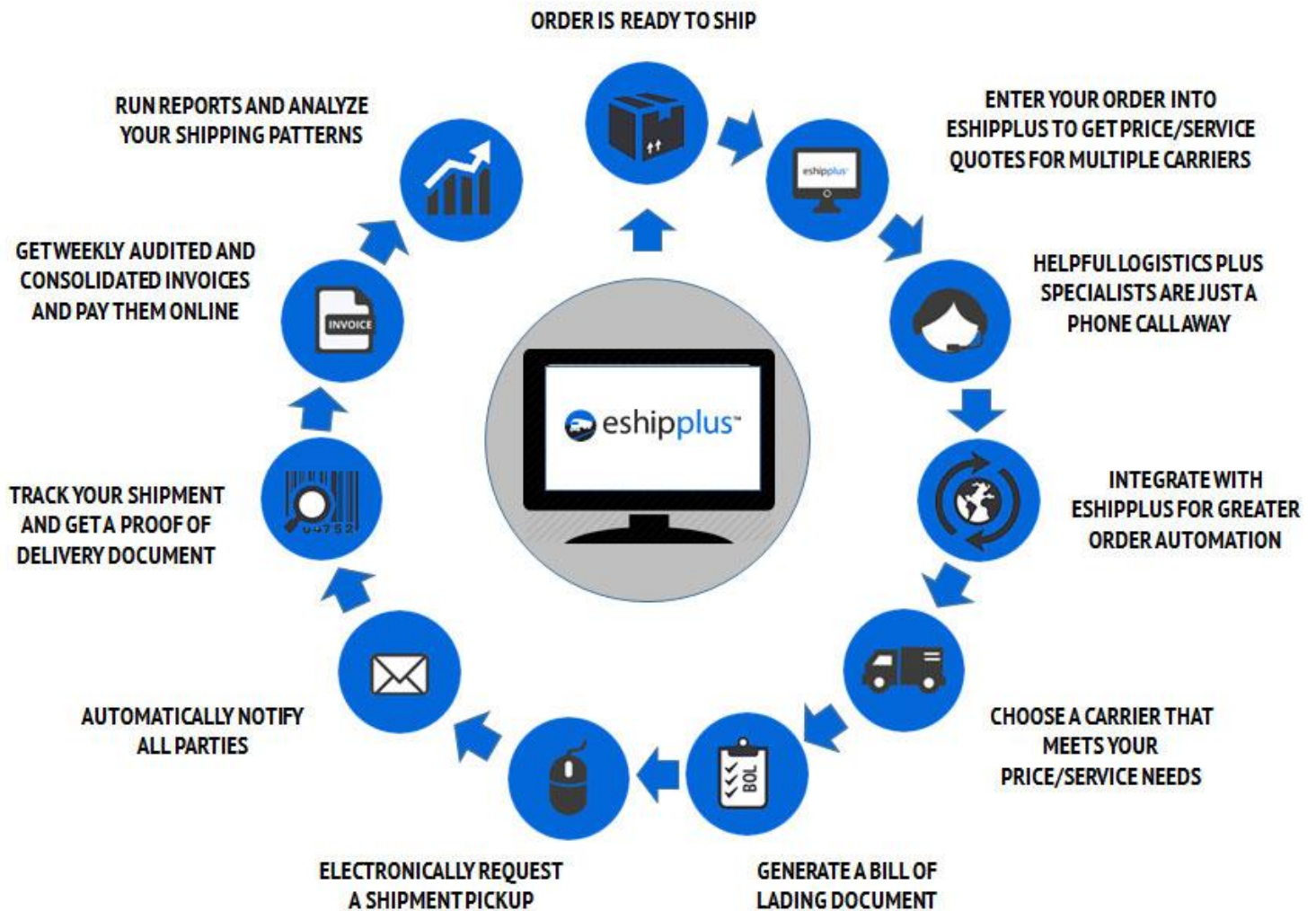
eShipPlus TMS

eShipPlus™ is a powerful cloud-based transportation management system (TMS) for Logistics Plus North American customers, now with embedded MyFreightTrends™ tools.



eshipplus™ Is A Full-Service Transportation Management System (TMS)

The Logistics Plus eShipPlus system was developed by and for transportation professionals. In addition to getting access to a suite of powerful online tools, you will also enjoy 24/7/365 back-office operational support, customer service, freight bill auditing, and invoice consolidation services from our talented and caring North American Division (NAD) team of logistics specialists. Let us show you our *passion for excellence!*



logisticsplus.com/eShipPlusTMS

MyFreightTrends™

MyFreightTrends™ is a business intelligence tool that is embedded inside eShipPlus™. This off-the-shelf report provides customers with detailed dashboards and analytics regarding their North American freight shipping.

myfreighttrends™ Provides Detailed Dashboards and Analytics

POWERED BY LOGISTICS+

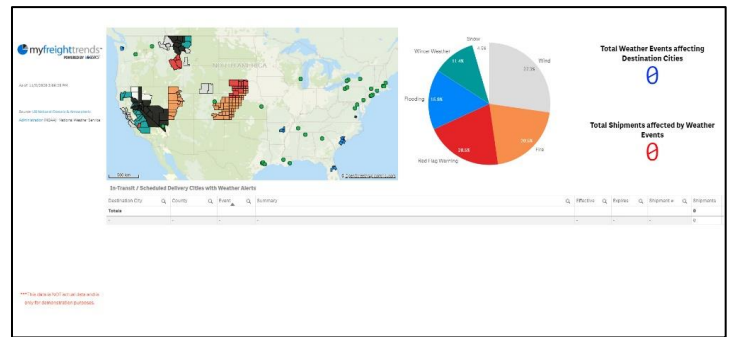
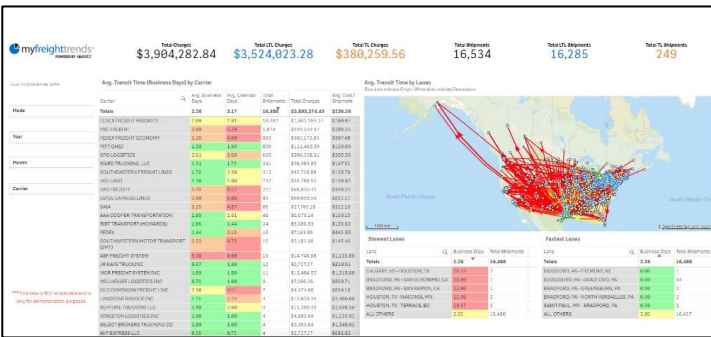
MyFreightTrends™ is universally available to all eShipPlus users. This off-the-shelf report provides customers with detailed dashboards and analytics regarding their North American freight shipping, including:

- A **Summary** report with total LTL and FTL spend by mode and by carrier;
- A detailed **Lane Analysis** report with network velocity metrics;
- A **Lane Performance** report with average shipment cost trends by location;
- A **Shipment Details** report that can be exported to Excel;
- A freight **Charges Summary** report with historical trending; and
- A **Weather Alerts** map detailing weather events that may impact domestic supply chains.

All the dashboard reports are **highly interactive**, meaning users can click on graphs and images to instantly filter views based on modes, carriers, lanes, and timeframe.



Shipment Details table with columns: Shipments, Carrier, Mode, Origin, Destination, Ship Date, Ship Type, Ship Weight, Ship Volume, Ship Length, Ship Width, Ship Height, Ship Weight Unit, Ship Volume Unit, Ship Length Unit, Ship Width Unit, Ship Height Unit, Ship Weight Unit, Ship Volume Unit, Ship Length Unit, Ship Width Unit, Ship Height Unit. The table lists individual shipments with their respective details.

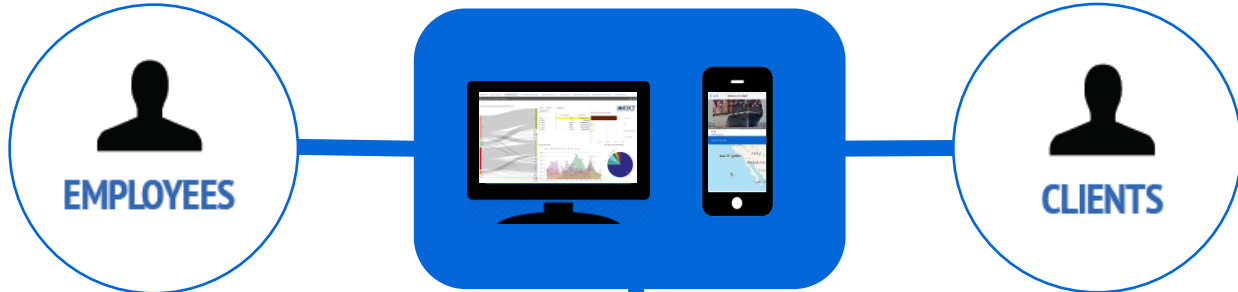


Training Webinar: https://youtu.be/_LKxtBFgpDQ



MyLogisticsPlus™

MyLogisticsPlus™ is a custom-built customer-facing portal, personalized to meet our clients' specific visualization, reporting, and usability requirements, and to provide extended functionality for all transportation modes and logistics activities.



mylogisticsplus™

CargoWise One

Industry standard from WiseTech Global for integrated cargo management, freight forwarding, tracking, customs clearance, warehousing (WMS), accounting, and more.

eworldplus™

Our client-facing web portal that's integrated with CargoWise One to provide real-time global shipment quoting, cargo tracking, warehousing, and more.

eshipplus™

Our proprietary North American transportation management system (TMS) with user-friendly for quoting, tracking, booking, and embedded MyFreightTrends™ dashboards.

transtream

Our seamlessly integrated Logistics Plus Fulfillment Solutions eCommerce pick, pack and ship fulfillment platform.

Qlik

Qlik is a 9-year Gartner Magic Quadrant platform that powers our business intelligence (BI) and analytics.

PartnerLink

Our B2B data interchange solution for easy integration with EDI and non-EDI partners, ERP Systems and eCommerce platforms.

BITA BLOCKCHAIN IN TRANSPORT ALLIANCE

LP is an active member of the Blockchain in Transport Alliance and working on implementing blockchain visibility solutions.

