



PASSION FOR EXCELLENCE!

3 1/2 PL™ SUPPLY CHAIN SOLUTIONS

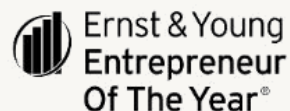
logisticsplus.net | contactus@logisticsplus.net

ABOUT LOGISTICS PLUS



WE'RE EXPERIENCED AND WELL RECOGNIZED

- Founded in 1996 by Jim Berlin to be a lead logistics provider for GE Transportation
- \$300M+ privately held company headquartered in Erie, PA (USA)
- Many awards for entrepreneurship, growth and service excellence; and membership in many reputable organizations



OUR GLOBAL NETWORK

🌐 We have 500+ employees at 50+ locations in 20+ countries worldwide





THE LOGISTICS PLUS NETWORK



NORTH AMERICAN



Warehousing &
Fulfillment Solutions



INTERNATIONAL



4PL SOLUTIONS



4PL Dedicated
Logistics Programs:



COVERING YOUR SUPPLY CHAIN

We are **LARGE** and **COMPREHENSIVE** enough to satisfy any link in your North American or Global supply chain ...

But we are still **FLAT**, **NIMBLE** and **RESPONSIVE** to meet your specific logistics challenges.



YOUR EXTENDED LOGISTICS TEAM



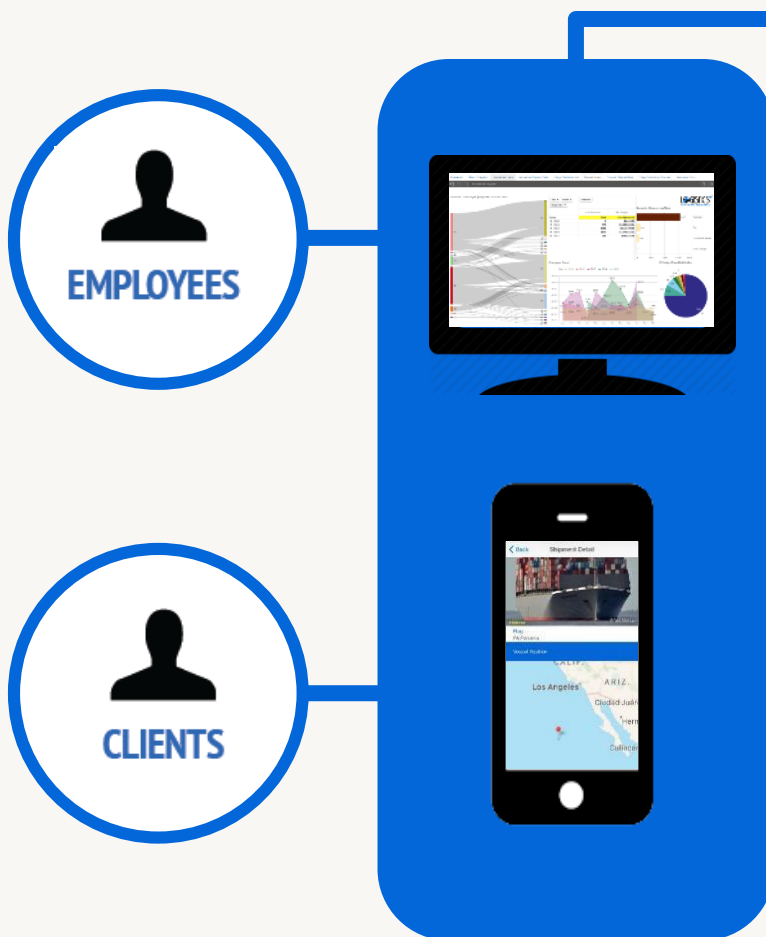
- 🌐 As a part of your team, we look up and down your supply chain, identify the weakest links, and repair them.
- 🌐 With our 3½ PL supply chain solutions, we can identify greater opportunities for savings in both money and time; and we do it all without increasing your staffing.
- 🌐 Let us take on your transportation headaches, while you focus on what you do best: producing and selling quality products!



HERE'S WHAT WE CAN DO **FOR YOU**



- Manage both domestic and international shipping
- Access a broad range of transportation services
- Document and simplify the logistics process for sites
- Oversee customs and compliance regulations
- Provide technology and business intelligence support
- Identify potential savings opportunities
- Implement cost savings projects
- Liaise between allocated carriers and shipping sites
- Resolve disputes raised by sites or carriers
- Audit freight invoices to ensure accurate billing
- Facilitate idea generation with our clients' logistics team
- Test pilot special projects to determine effectiveness
- Anything else needed to add value to the partnership



MyLogisticsPlus™ is our custom-built portal, personalized to meet our clients' specific visualization, reporting, and usability requirements, and provide extended functionality (via Desktop PC and Mobile App).

CargoWise One

Our integrated global logistics and back office platform for freight forwarding, tracking, customs clearance, warehousing (WMS), accounting, and more.



Business Intelligence (BI) and analytics powered by Qlik® - an 8-year Gartner Magic Quadrant platform.



Our client-facing web portal that's integrated with CargoWise One to provide real-time global shipment quoting, cargo tracking, warehousing, and more.



Custom-built mobile warehousing and transportation app for iPhone and Android.



Our proprietary North American transportation management system (TMS) designed to be extremely flexible and user-friendly for quoting, tracking, booking, and more.



Seamlessly integrated eCommerce pick, pack and ship fulfillment capabilities, powered by VeraCore®.



Customized, turnkey management system for the Furniture, Fixtures & Equipment industry.



END TO END SUPPLY CHAIN VISIBILITY

Logistics Plus[®] offers a full suite of user-friendly BI tools that are reflective of specific customer requirements.



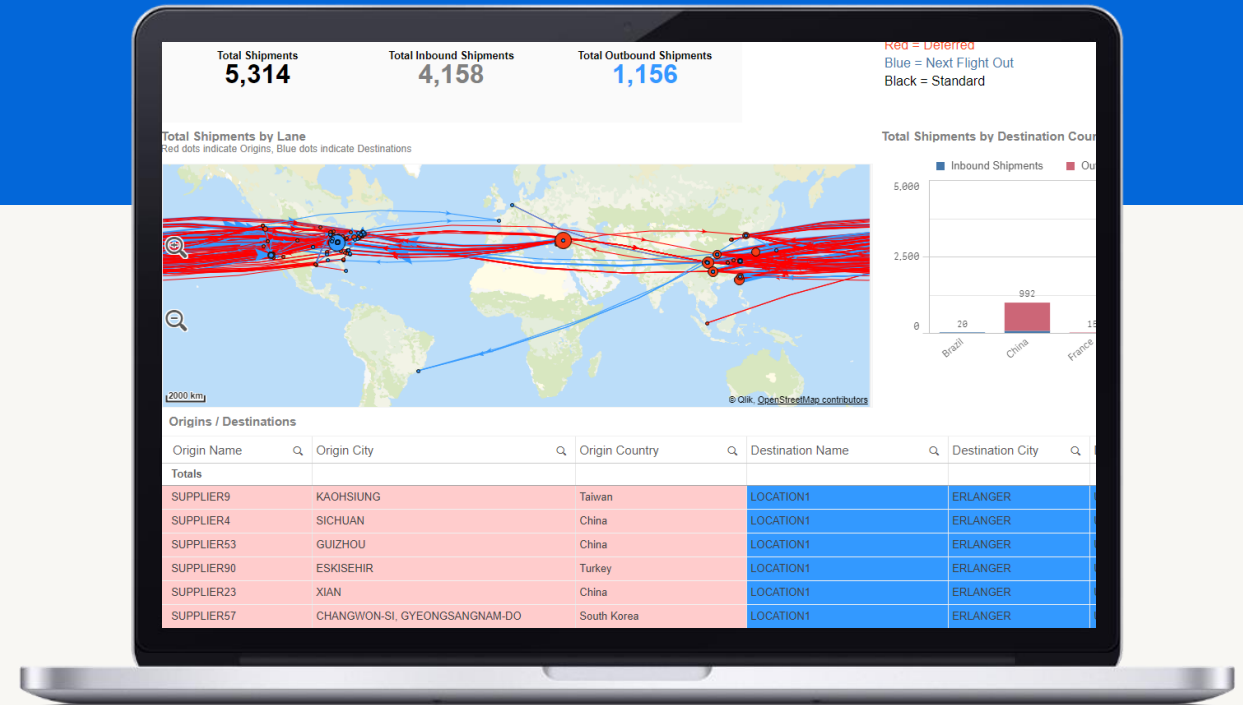
Our custom **analytic solutions** cater to the exact specifications and requirements of our clients rather than having a standard “out of the box” solution.



By using **predictive analytics**, we help businesses budget and plan by utilizing existing data to forecast and anticipate future events.



Our **custom reporting** abilities begin with raw data and end with digestible, useful information to help our clients to find savings opportunities.





CONTROL TOWER CAPABILITIES



CAPTURING DATA POINTS ACROSS THE GLOBE

By tracking milestones and the progress of each shipment, we are able to identify specific pain points in a supply chain.



Logistics Plus captures data points regarding the physical movement of shipments across the globe. Our control tower capabilities find the root cause of supply chain disruptions so our clients can readjust their expectations or change their processes in a specific country.



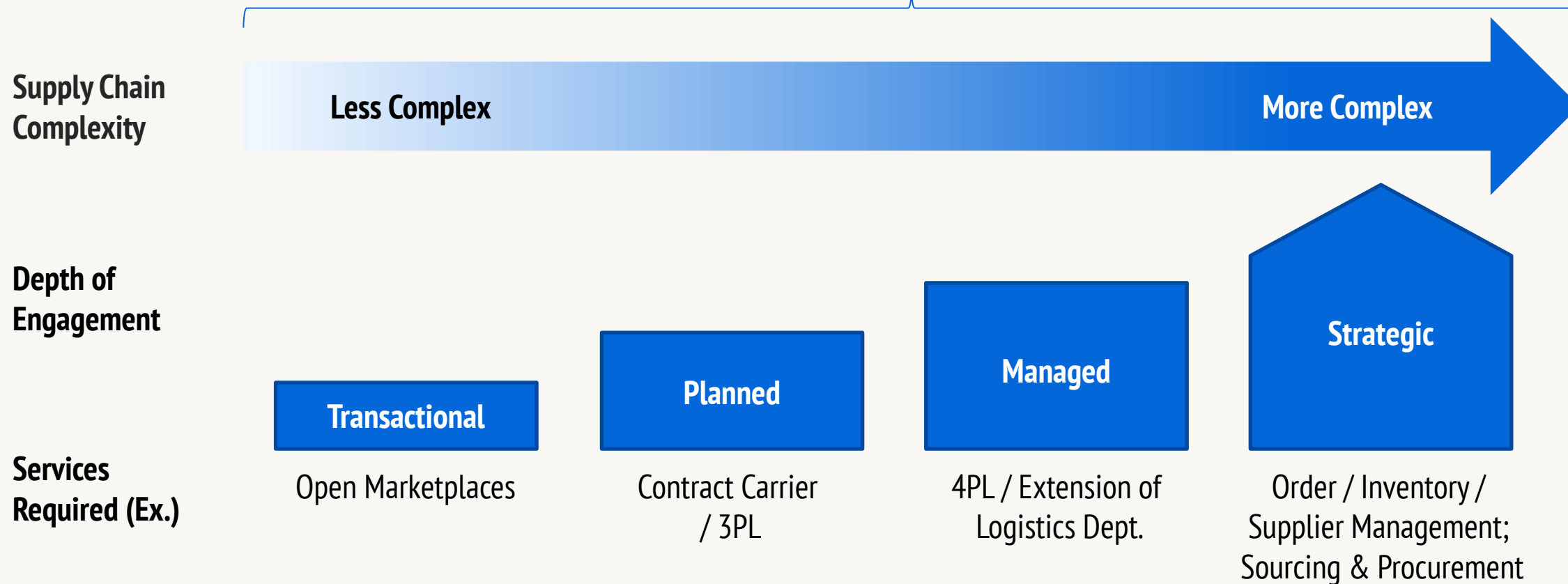
By offering the flexibility of tracking one unique shipment, or analyzing multiple shipments on an aggregate level, our control tower capabilities allow our customers to gain a better perspective on all shipment activities.



VALUE ACROSS ALL SUPPLY CHAINS



Scope of LOGISTICS+ Services





CAPABILITIES BASED ON ENGAGEMENT



TRANSACTIONAL



- LTL or FTL Transportation
- Freight Forwarding
- Customs Clearance
- Project Cargo Services

Example Goal: Get the freight moved

PLANNED



- Annual Transportation Rate Agreements & Contracts
- Global Compliance and Licensing

Example Goal: Automate decision making & remain fully compliant

MANAGED



- Onsite Logistics Support (4PL)
- Warehousing & Fulfillment
- FPA Services
- Business Intelligence
- Freight Bill Auditing
- Inventory Control

Example Goal: Gain global visibility & control tower capabilities

STRATEGIC

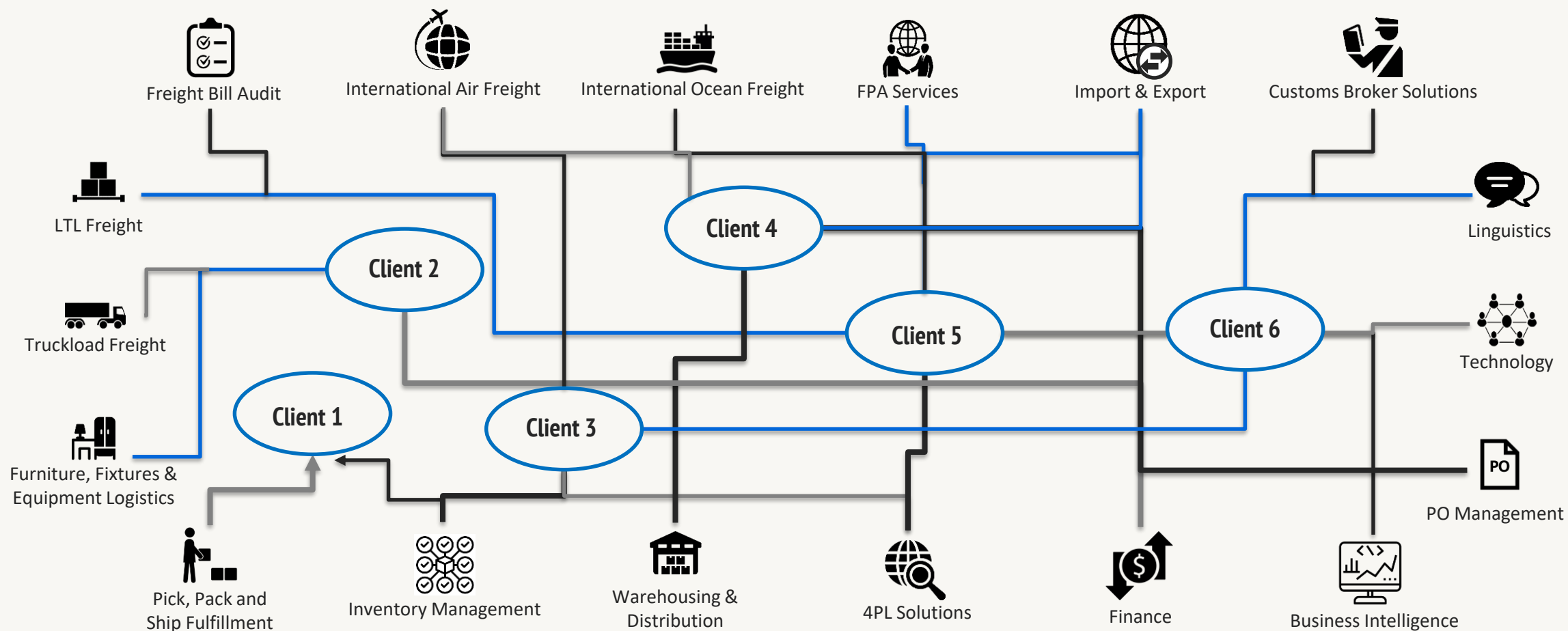


- Custom Technology Solutions
- Financing
- PO Management
- Supplier Management
- Furniture, Fixtures & Equipment Logistics

Example Goal: Virtualize the business

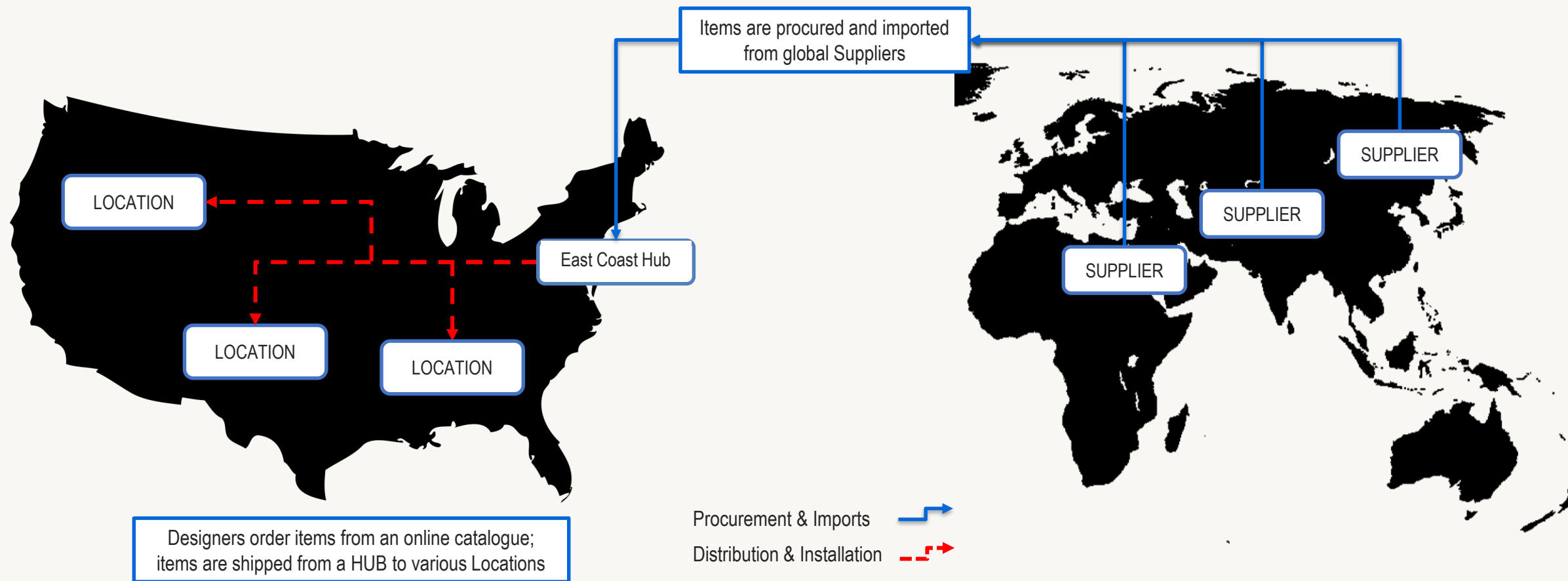


CAPABILITIES MATCHED TO NEEDS



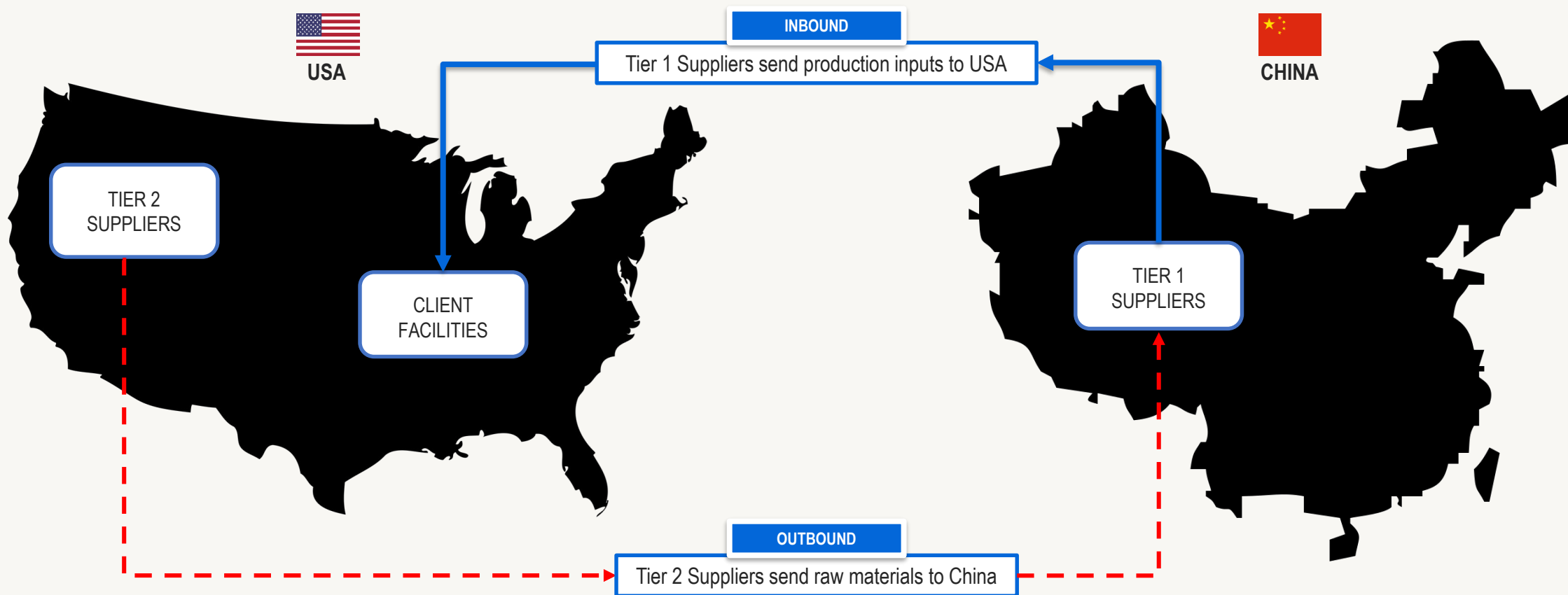
CASE STUDY: FF&E INDUSTRY

- Managing end-to-end supply chain for a global co-working / office space provider



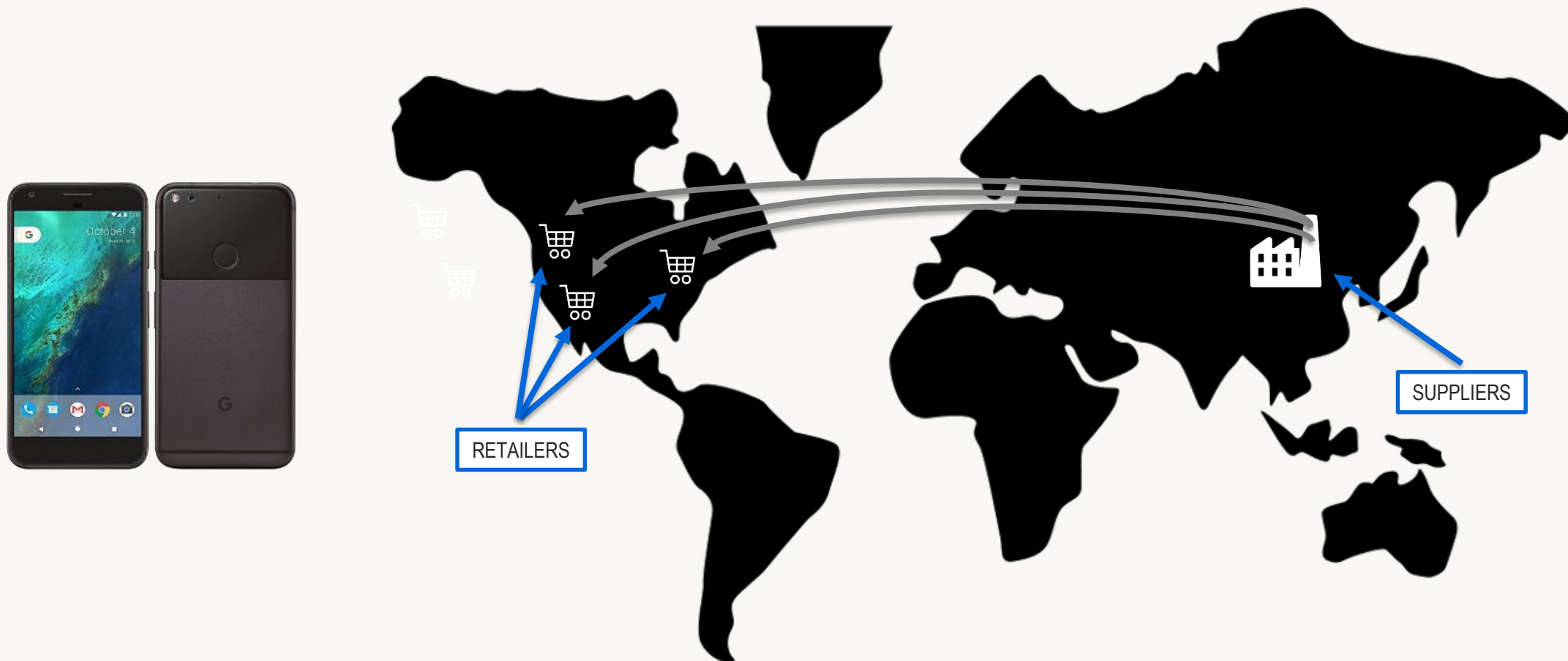
CASE STUDY: AVIATION INDUSTRY

Managing two legs upstream for a Fortune 100 client



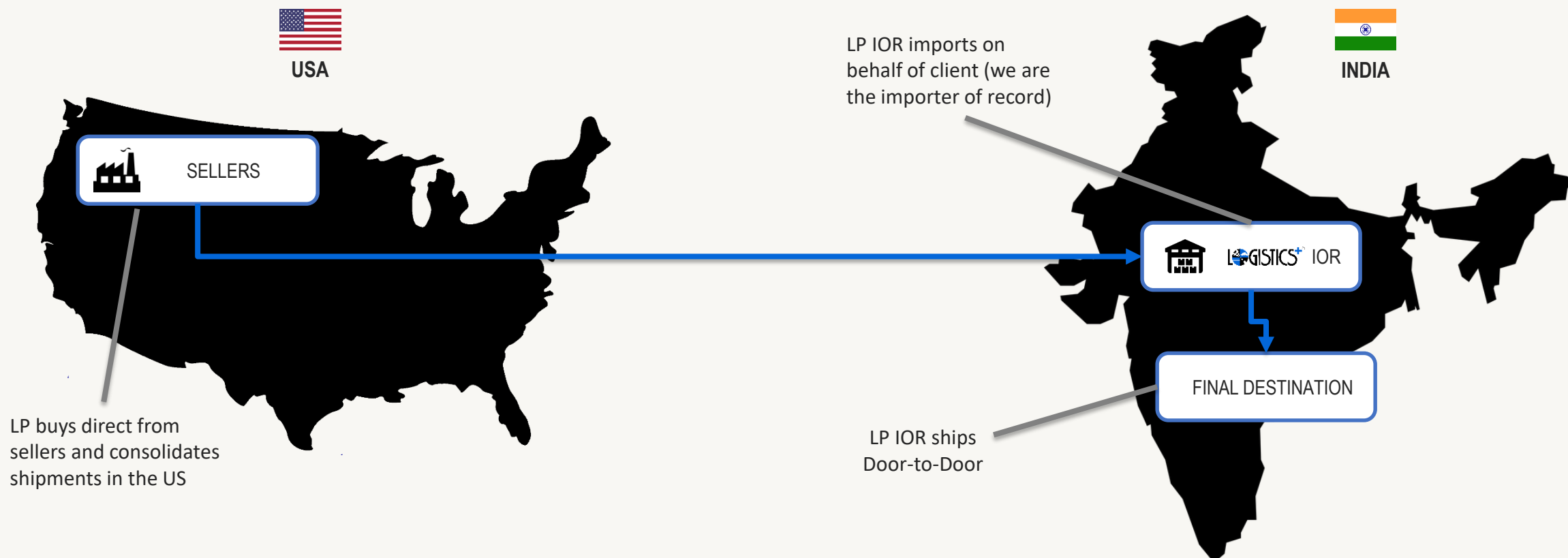
CASE STUDY: TECHNOLOGY INDUSTRY

Managing the global supply chain for a top consumer technology company





CASE STUDY: TRANSPORTATION INDUSTRY



LP CAN BE EOR AT ORIGIN, IOR AT DESTINATION, OR EVEN PERFORM THE PROCUREMENT



3½PL™
SOLUTIONS+

Total Logistics Management

LOGISTICS+
PASSION FOR EXCELLENCE

It's what we do!



LET US IMPROVE YOUR **GLOBAL SUPPLY CHAIN** EFFICIENCY!

Logistics Plus Inc. | 1406 Peach Street | Erie, Pennsylvania 16501 USA

Phone : **+1.866.LOG.PLUS** (+1.866.564.7587)

Email : **quotes@logisticsplus.net**

Website: **www.logisticsplus.net**

3 1/2 PL™
SOLUTIONS +

 facebook.com/LogisticsPlus

 twitter.com/LogisticsPlus



THANK YOU!

logisticsplus.net/testimonials

